

Newsapes

National Garden Clubs Landscape Design Consultant's Council News

Editor Janice Doyle Summer/Fall 2008

FROM OUR NGC LD CHAIRMAN

To All LDC Members and Event Chairmen:

Included in this issue of *Newsapes* is LDSP 15 from the Operations Manual for Landscape Design, which was revised in November 2007. Most of you were sent the revised pages at that time. But just in case you need a copy to reproduce to hand out at your schools or LDC meetings, we are including this information in this issue of *Newsapes*. All students and school or refresher chairmen should be aware of this updated information.

September, October and early November are very busy months for planned schools and refreshers. Course I will be offered in California, Virginia, Michigan and Iowa. Course II will be offered in California, Maine, Texas, North and South Carolina. Course III will be offered in Massachusetts, and Course IV will be given in Missouri and Maryland.

Refreshers (LD and Multiple) are scheduled in North Carolina (sponsored by Georgia), California, Ohio, Michigan, Pennsylvania and Alabama. It is a busy schedule. We hope many of you will be able to participate in these events.

Marion Ryan, NGC LD Chairman

FROM THE READING/LITERATURE CHAIRMAN

Twenty years ago when Nell Denman was compiling an extended calendar for

garden clubs, she asked several of us to send her quotations to include in it. I still can paraphrase what I wrote: "Keep the joy of gardening alive; plant something new every year."

Finishing a landscape design series doesn't end with just a card or certificate for your files. It's the beginning of a joyous relationship with the world of horticulture. I no longer get up at 5:30 a.m. to groom my gardens before the hot summer heat makes it impossible. Nor do I plan trips overseas to visit the famed European and Asian landscapes found scattered over the world. But I take great pleasure in perusing my magazines and those in my local library. Weekly I scour the library's shelf for new books and happily pick up a book on shade gardens or patio gardening or any on a multitude of subjects, just for the delight in seeing what others did when they handled their plant material.

Catalogs are full of beauty. Maybe they're highly exaggerating - just enjoy it! One particular magazine is causing me a great deal of trouble. I can't throw it away and it's piling up. But when a friend asked how to prune hydrangeas, I quickly found a descriptive article to give her. The web is a marvelous source of information. It's such fun to examine the illustrations, read the text and try to find something you've not used before but would like to find just the appropriate niche for.

It would be interesting to know how our postgraduate students are applying their knowledge. Have you taken a deeper

interest in your landscape and the parks around you? Do you serve on a park board, visit gardens when you pass through a town, put gardens on your flower show schedule, judge gardens, and find joy in doing so? Do you look for plants needing less water, less maintenance that attracts butterflies? Are you, too, keeping the joy of gardening alive?

Lucy Hendy, Chairman LDSP
Reading/Literature

CARING BUTTERFLIES

This title is correct-Caring Butterflies NOT Caring FOR Butterflies.

We all know about planting shrubs and flowers in our yards to attract butterflies. Did you know that there is evidence that butterflies can sense human feelings and show concern?

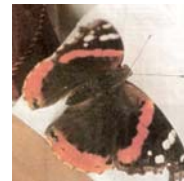
In an article from the Washington Post August 24, 2008, The Butterfly Effect shows how a butterfly “adopted” a sad human. The author Dan Southerland states, “In July of last year, a butterfly landed on my shoulder while I was taking a break from my office for a few minutes one afternoon to talk business with a colleague. I was sure that the butterfly would fly off—in the surroundings of concrete and granite. I had never seen a butterfly in this part of the city before. Now I had one clinging to me. The butterfly stayed there and I decided to get him something to eat ...even though it was during rush hour traffic. The butterfly rode right into the steak house... The chef prepared our meal for the butterfly too - chopped strawberries. The butterfly took no interest in his meal. The butterfly flew to another table and then flew back to my shoulder. People were enjoying our conversation about the butterfly and exchanged pleasantries. It occurred to me that a butterfly could bring out the best in people.”

The butterfly then rode in a taxi to our author’s home. Butterfly, *Vanessa atalanta*, Red Admiral, stayed in his new home visiting the author, his family, and their viewing friends at the same time everyday. Our author enjoyed this company for 37 days. “Explanation 1: The butterfly was a reincarnation.

“Explanation 2: This is a message for you - Slow down. Pay attention to what’s really important in life.”

I think the butterfly made his point with our busy Author. Did he make a point with YOU through this editorial?

Janice Doyle, [Newscapes](#) Editor/NGC
LDC Chairman



FROM THE INSTRUCTORS' CHAIRMAN

More instructors are using PowerPoint for their lectures. The LDSP policy for this presentation is as follows:

The course outline can be printed from a PowerPoint presentation in "handout" view, with a maximum of 3 (three) slides per page.

Using this format will allow the student to make clear concise notes. If you have any questions, contact the Instructors' Chairman.

The Special Interest Topics being used are especially interesting. Your creativity adds new information to each course. Thank you for all of the work you do for the Landscape Design Courses.

Janet Kinney, Instructors' Chairman

FROM THE INTERNATIONAL

AFFILIATES CHAIRMAN

In the Landscape Design Program the International Affiliates are supervising a Landscape Design School in wonderful Acapulco where they can appreciate the landscapes that integrate the sea. The first Course was held in Loyola University that is situated on a high hill, with an astounding tropical view. The second Course will be held in the same place in November 17- 19. 2008.

International Affiliates have the chance to go to Panama City to meet with the NGC group and enjoy their surroundings. These are really different from Mexico and very beautiful.

They had the opportunity to enjoy the hospitality of Cheryl Obediente, their LD chairman. Her house is a gorgeous garden enclave between skyscrapers. The young and the not so young enjoyed dancing.

The Exposition Expo-Flora Panama, was big and beautiful, the plants astounding, the designs original and full of color.

Our IA's Chairman had the opportunity to meet interesting people from different countries through the Landscape Design Program. The Hospitality of the Panama Ladies was great. To see the Canal and sense the pulse of this growing nation was a special experience.

Sara Lámbarri, International Affiliates Chairman

NATIONAL GARDEN CUBS, INC. 2007-09 LANDSCAPE DESIGN COMMITTEE

Chairman

Marion E. Ryan
198 Highland St. (May-Nov.)

Weston, MA 02493-1112

781-891-1360

781-891-0616 FAX

mekxmekx@aol.

1621 Spoonbill Lane (Jan.-Apr.)

Naples, FL 34105

239-649-0961

Accrediting Chairman- South Atlantic,
Jamaica, Deep South, Central
Betty Waterfield

6936 74th St Circle E

Bradenton, FL 34203-7182

941-739-5884

941-739-5885 FAX

blw@tampabay.rr.com

Accrediting Chairman-

New England, Central Atlantic

Nan Jean Roller

2545 SW Terwilliger Blvd #1006

Portland, OR 97201-

6311

503-299-1006

njroller@tplaza.org

Accrediting Chairman- Rocky
Mountain, Pacific, South Central

Sally R. DeSimone

1 Sunset Shore Drive

Narragansett, RI 02882

401-284-0722

401-421-0677 FAX

sallyrd1@cox.net

LD Councils' /Newsletter/ Chairman

Janice J. Doyle

770 Ivy Farm Drive

Charlottesville, VA 22901-8852

434-979-9910 FAX

BDoyle7@aol.com

Instructors' Chairman

Janet B. Kinney

28 Redmont Road

Watchung, NJ 07069-6030

908-756-0075

jh-jbkinney@worldnet.att.net

Reading/Literature Chairman

Lucy H. Hendy
2904 N. Britain Road
Irving, TX 75062-4598
972-252-1046
lhen2@verizon.net

International Affiliates

Sara Lambarri
Islas de Revillagigedo #79
Chiluca Atizapan, Edo de Mex.52930
Mexico
(52) (55) 5308 0225
saralambarri@prodigy.net.mx

Alicia S. de Villarreal

Idalia Aguilarv
alisv@hotmail.com
idealiaaguilarv@hotmail.com

Multiple Refreshers/Advisor

Elizabeth K. Coffey
5911 One Penny Drive
Fairfax Station, VA 22039-1118
703-978-4128
703-978-5207 FAX
703-978-5208
libbykc@verizon.net

**NGC ANNOUNCES AMERICAN
HORTICULTURE SOCIETY EVENTS**

Presentation: "The Science and Magic
of Flowers" October 23 at 7 p.m.

Webinar: "Design and Plants for
Woodland Gardens" October 16 at 1
p.m., Eastern Time

Help Plant a Row for the Hungry!

Cleaning out your summer garden? Had a bumper crop of tomatoes and zucchini you don't know what to do with? Consider donating your excess harvest to help your community. Through a partnership with [Plant a Row for the Hungry](#) (PAR), the AHS has donated more than 6,000 pounds of fresh produce to food banks in the Washington, D.C. metropolitan area this year. If you live in the area, you can help us reach our goal of 7500 pounds by dropping off your donations at the

Education Office at River Farm, the AHS headquarters in Alexandria, Virginia, through November 1. Additionally, Kathy Jentz, editor of the Washington Gardener magazine, is hosting a collection day on Sunday, September 28 between 3 and 6 p.m. Bring your excess edibles to 826 Philadelphia Avenue in Silver Spring, Maryland, and it will be counted with the AHS's total. Or you can bring your fresh produce to a food bank of your choice and send the total weight to Jessica Rozmus at (703) 768-5700 ext. 137 or jrozmus@ahs.org. All donors will receive a PAR plant marker and receive some seeds for next year's garden. Wherever you live, consider finding or establishing a PAR campaign to help those in need. For more information, visit <http://www.gardenwriters.org/par/>.

You may visit their website at www.ahs.org



Laugh-In

Ziggy greets a little flower in his garden, "Good morning little flower How are you today?---And how's your mum?"

Ziggy's houseplant is irritated with him. With a disgruntled attitude and sigh it says: "I hate this time of year...He always spends so much time outside with those dizzy delphiniums and those disgusting daisies. I'll never know what he sees in those sickening sweet peas and those putrid petunias!"

**Plants Are Some of My Favorite
People by Tom Wilson**

NEWS FROM OUR STATES

Alabama has scheduled Study Course 1, Series 11 to be held in Auburn, AL on Oct 15 & 16 at the Auburn University. Linda Stephens, Secretary, LDCC/Alabama

Arizona does not have a Newsclapes Chairman; however, Landscape Design information is forwarded to each club. Fran Harkey, AFGC

California LD Consultants Council Chairman, reports: During the past year, nineteen individuals received honors for thirteen different landscape design locations by the LD Consultants Council. In June, the Council honored the Conejo Valley Arboretum, the landscape architect and CGCI for the "Trail of Trees" which was planted in honor of CGCI President Robin Pokorski. The most unusual landscape honored was a Memorial and Military Rose Garden, which contains roses, all of which have military names. This coming year, the LD Consultants Council is promoting nominations of gardens associated with wineries. The use of email to send our newsletters has been a cost saving for the Council.

Pat Claves, the CGCI LDSP Chairman, reports: During the past several months, 18 students became provisional consultants. Last May, Series 22, Course 2 in San Andreas had a total of 42 attendees, with 19 garden club members and 22 non-members taking the exam and passing. Course 3 will take place on October 25-26, 2008 in San Andreas with Steve McNeill and Greg Randall as instructors. The special interest topic is "English Garden Designs and Its Impact on American Garden Design in the 20th Century." Courses 1 and 2, Series 23 took place on September 2-5, 2008 in Temecula. Instructors were Susan Frommer, Charlotte Fox, Bob Gordon, Charla

Harris, Greg Randall, Karen Sumek and Ray Williams. The special interest topics were "The Garden of Eden" and "Exotic Species—Species That Don't Belong." A Tri-Refresher was held in conjunction with the CGCI Fall Board Meeting in Grass Valley on September 8-9.

The **Florida** Landscape Design Consultants' Council has had Habitat for Humanity as their main goal during the past year and has been able to help with the landscaping of many homes. This contribution to our local families is very rewarding and the assistance we can give to educate the public on the advantages of properly planning and executing a home landscape fulfills our education to the community.

The Landscape Design Consultants' Council, the Environmental Consultants' Council and the Gardening Study Consultants' have formed a Tri-Council with meetings held three times a year prior to the Florida Federation of Garden Clubs Board Meetings. Many members of these groups are involved with all three disciplines and this enables a closer relationship and better cooperation. A Newsletter is published and distributed six weeks prior to each of the meetings to keep information current.

Allen Deitz is the Landscape Design Chairman for **Idaho**. Dotty Hurd, President, Idaho Garden Clubs, Inc. djhurds@aol.com

Kentucky's Landscape Design Chairman is Judy Ferrell [j ferrell@worldnet.all.net](mailto:ferrell@worldnet.all.net)

Maryland's plans and preparations for Landscape Design School Course IV are well under way. Course IV will take place on October 14-16 at Hilton Garden Inn in White Marsh. They have visited the gardens that will be toured,

and arrangements have been made for our buses. Brochures were made available in August. Full course is \$150.00, Tuesday only \$75.00, Wednesday only (bus tour day) \$90.00. Please register early as space is limited on the buses. For more information contact: Chair, Mary Ellen Bay (410) 848-1015, Vice-Chair, Susie Heck (410) 756-1113 or Susie@infopathways.com Registrar, Mae Scott Wilomae@comcast.net

The Maryland Landscape Design Council held its spring meeting on May 21, 2008. The gorgeous spring day (no rain) started with a tour of Jean and Sidney Silber's garden. The 10-acre garden in the Greenspring Valley, north of Baltimore, was featured in *Style* magazine in 2003. The tour was planned for the height of the rhododendron season. The tour led by Jean and Sidney (both members of the Maryland Horticulture Society) included woodland garden trails, perennial beds surrounding open sunny lawns and four water gardens areas. All areas showcased an impressive collection of sculptures including several bronzes cast by Sidney Silber carefully incorporated into the landscape. The business meeting and luncheon followed at Gramercy Mansion, a contributing house in the National Register Greenspring Valley Historic District. Gramercy was built in 1902 by Alexander Cassatt, owner of the Pennsylvania Railroad and brother of artist Mary Cassatt, as a wedding gift for his daughter. In the 1950's it was the headquarters for the Koinonia Foundation, a predecessor of the Peace Corps. Since 1985, it has been owned and renovated by Dr. and Mrs. Pomykala and is now a Bed and Breakfast and Conference Center and includes Koinonia Farm, an organic farm started in 1951. Anne Pomykala, a council member, conducted a tour of her beautiful gardens surrounding Gramercy

following the meeting.

The fall meeting is planned for November 2008.

Federated Garden Clubs of Maryland and the Landscape Design Council will sponsor Course IV of Landscape Design School listed above. Anne Madden, LDCC Chairman

The Garden Club Federation of **Massachusetts** will sponsor Course III, Series 13 on Oct. 23, 24, and 25, 2008 at Regis College in Weston, Massachusetts. Visit the GCFMA website for a registration form. <http://gardencentral.org/gcfm/customhtm15/>

34 received credit for refreshing in Landscape Design on the Massachusetts Landscape Design Council Bi-Refresher Tour of New York's Hudson River Valley. Some of the most beautiful landscapes in American garden history were built along the shores of the Hudson to take advantage of the area's dramatic natural scenery. This area was the home of Andrew Jackson Downing, the nation's most influential landscape designer before Olmsted. The gardens and historic dwellings on the tour included Kykuit, a Rockefeller home for four generations, with its extraordinary gardens, mansion and art collection; Stonecrop Gardens, the creation of Frank Cabot, founder of the Garden Conservancy, and home to his renowned gardens and plant collections, Lyndhurst, Olana, Boscobel, VanCortlandt Manor, and Montgomery Place. Terese D'Urso, Chairman, Landscape Design Study Program-Massachusetts

Minnesota does not have Landscape Design Schools since they are so small and there has been little interest in schools in the past.

Barbara Isaacson, President

Missouri's Course 4 of Landscape Design School will be held in St. Louis, MO October 14-16, 2008. Cost of course is \$80.00 includes lunch. Registration should be sent to: Jean Kovarik, 13544 Sunset Ridge Lane, St. Louis, MO 63128

They have had excellent attendance in previous schools and are looking forward to having current students becoming Landscape Design Consultants following this school. Barbara Schuette, Missouri Landscape Design Chairman

National Capital Area enjoys regular programs and field trips, and their Council is trying to do its part in improving the local ecology. They are trying to educate our members and others on the problem of the rapidly vanishing forest and tree cover. Saving the rest of the forest and trees can be done through county regulations. Members of their Council are getting the statistics on the local counties' laws and regulations on Forest Conservation and Tree Protection. This is a big project because of the many jurisdictions involved. They are working closely with one big county, Montgomery County, Maryland, that is taking the lead in this area. When all the data comes in, and is evaluated, they will publish a chart comparing the laws and regulations of the various counties.

Dianne Gregg, President NCA LDCC

Nebraska is trying to encourage members interested in Landscape Design to attend meetings in Iowa or other states. They may consider giving scholarships to attend Iowa. Nebraska is going to focus on Flower Show Schools and Symposium for economic reasons.

Alice Hemsath, LDSP Chairman

Garden Club of **New Jersey** has completed a very successful Course IV. There were 36 in attendance. We are presently looking for a new Chairman to start with Course I.

Onnolee Allieri, GCNJ President

One Individual Consultant from **New York's** Finger Lake Region is planning a Waterfront Erosion Control Project while another is coordinating the building of a Community Children's Garden. No Study Programs or Refreshers are currently scheduled within the state. Audrey Gregory, Landscape Design Schools Chairman

The **New Mexico** Landscape Design chairman is very knowledgeable. The president and one other garden club member attended the landscape tour at National Convention. Their state sponsored an Environmental School. They enjoyed walking around the mountains in cooler weather than at home. They have had several Garden Tours in our State where very creative landscape designs done by local Garden Club members - both private and public. New Mexico Landscape can be very exotic.

Colleen Hinker, New Mexico State President

In New London, **New Hampshire** garden clubs have had the chance to visit the Community Garden at Tracy Library and to enjoy a restored Olmstead Brothers design dating from 1927. The garden is located near Colby Sawyer College. New London Garden Club led the restoration in 2002, and maintenance is by volunteers, led by professionals.

Carol Weiss and Joyce Kimball, President

North Carolina's Landscape Design Study Course II was held on Sept. 15-17, 2008 at the Sarah P. Duke Gardens.

Alice LeDuc was chairman for the school, and she plans to finish all four schools in a two-year period.

A **Pennsylvania** Landscape Design School, Course 1 will be held on April 28 - 30, 2009 at Mansion at Kings Gap, Kings Gap Environmental Education Center, 500 Kings Gap Road, Carlisle, PA 17015. A brochure is being completed and will be circulated. Limited overnight accommodations will be available for up to 30 attendees on site.

As is always the case with **Rhode Island** they do not have any schools that they run themselves. They enjoy the excellent Massachusetts Federation programs. All the LD news that comes out of this state other than new consultants comes from MA. They do not have any new consultants at this moment because the program is offered in the fall, as is the refresher this year. They are always looking for new ways to entice people to take these courses.

South Atlantic Region is planning a tri-refresher to take place during the SAR Convention in Blacksburg, VA on March 8-10. The event will primarily take place on the grounds and surroundings of Virginia Tech.

South Carolina is offering a Landscape Design School that is scheduled for November 3-5 at the Hayden Center at SC Botanical Garden. They plan to do something special with head Horticulturalist at the Garden. Marsha Alexander

South Dakota has had no LD schools. They are not active at this time and do not have a LD Chairman.
Margaret Straley, President

The **Virginia** Landscape Design Consultants' Council took a wonderful

Pennsylvania bus tour from April 10 to April 14, visiting two Frank Lloyd Wright designed houses -- Falling Water and Kentucky Knob, Necessity State Park and the Phipps Conservatory. Nancy Pryce had arranged for our visit to the Pennsylvania Wildlife Symposium to hear an outstanding presentation by Dr. Mary Harwood, professor at Carleigh University. One outstanding thing about our tour to PA was the close working relationship between the PA Federation and the VALDCC. (It is so nice to have Nancy Pryce in our council and as the PA wildflower chairman which made this all possible. Margaret Healey, VLDC Secretary) They had their annual meeting at the Virginia Federation of Garden Clubs convention in Suffolk, Virginia with a spectacular program by Bill Smoot, who also provided unique centerpieces and favors. We also met on September 3 in Waynesboro, Virginia at the South River Restaurant and then toured a Gillette designed garden and shop at a couple of the area's outstanding garden centers. We are very sorry for the death of our president, Nell Cooper.

Kay Gray, President LDCC

Virginia's Landscape Design School Course I was held on September 8-9, 2008. LDS Course II will be March 9 & 10, 2009. Both were held at the Holiday Inn Tanglewood, 4468 Starkey Road, Roanoke, VA 24018. The group always enjoys a pre-school social to get students acquainted before the sessions begin.

Sue Patterson, LDSP Chairman

Vermont has no Landscape Design Chair man.
Sue Robinson President FGCV

West Virginia Garden Clubs will hold Landscape Design School, Course IV, Series IX, on May 20, 21, and 22, 2009. The event will be held at West Virginia

University, Morgantown, WV. For information contact Donna Davis WV Landscape Design School Chairman at dadodavis@frontiernet.net

Wisconsin's new series for Landscape School is scheduled to begin April 2-4 for Course I.

Carol Catlin WGCF Chairman
Landscape Design School

At this point in time **Wyoming** does not have any schools or councils that are active. We are down to about 200 members in the entire state so we are busy growing and planting.

Barb Yates, Wyoming Garden Club Pres

CONGRATULATIONS

On May 27, 2008 The Landscape Design Council (LDC) of Massachusetts today announced that it has presented the Landscape Design Council Award for Excellence to Marion Ryan in recognition of her outstanding civic accomplishment. Ryan has a long history of promoting landscape-design education and civic participation, from the local community to national level.

DID YOU KNOW?

Old fashioned folding toddler gates that used to keep toddlers in place make great trellises. You may come across one at a yard sale. All you do is extend the gate and nail stakes into the ground to stabilize it and it's ready to go. *

In a single season the average half-acre lawn generates 4-1/2 tons of grass clippings, or 334 thirty-gallon bags full. * (Editor note: let sleeping grass lie)

REFLECTIONS

BY MONTH

Up from the meadows

rich with corn,

Clear is the cool

September Morn. *John G. Whittier

Listen! The wind is rising

And the air is wild with leaves.

We have had our summer evenings,

Now for October eves! * Humbert Wolfe

Dull November brings the blast

Then the leaves are whirling fast. *

Sara Coleridge

.....
A modest garden contains,, for those who know how to look and to wait, more instruction than a library.

Henri Frederic Amiel

In my garden, I can find solitude. I can go out there and say, "no phones, no interruptions, I am busy," and then shut myself off for a little while. *

Helen Hayes

****365 Days of Gardening*** by Christine Allison

RECIPE FOR THE GARDEN

For an organic control for garden pests:

Sprinkle hot pepper flakes around the plant.

Plant radishes with cucumbers.

Plant herbs and marigolds with most vegetables.

For voles and chipmunk holes pour a generous amount of chili powder right down the hole. Ruth Garretson

Note: LDSP Form 15 follows. Page set into landscape mode. It can be downloaded from WWW.gardenclub.org.

The Landscape Design Study Program (LDSP) provides continuing education in Landscape Design. Course content is established by the National Garden Clubs, Inc. (NGC). Four sequenced courses comprise a series. Each course consists of ten hours of lectures, which may include visits to evaluate sites. Students (in the continental United States) may take no more than two courses for credit in a twelve-month period. A written examination is given based on both the required reading and the lecturers' synopsis or presentation.

After passing two courses, a student may become a **Provisional Consultant** and join a Landscape Design Council, a group that provides programs and tours that further the education of its members. Those members completing the four courses receive a **Consultant Certification Card**, which is recognized as a sign of special achievement among NGC members, but does not convey professional status.

Those who have had course training in evaluating landscapes are eligible to judge contests and displays as representatives of the Landscape Design Study Program in events participated in by Councils. Master Consultant status is achieved after attending four (4) refresher events (schools or approved refresher events) and may serve as guides or panel leaders in evaluating public designs.

STUDENTS

Note: Only clubs outside the continental United States and International Affiliate clubs may receive permission from the NGC Landscape Design Committee for procedures and time limitations different from those described below. Their local rules then take precedence for all students.

Member Students:

A member student belongs to a garden club affiliated with a state garden club in the National Garden Clubs, Inc. or to one of its International Affiliate clubs.

Non-member Students:

The courses and examinations are open to all. However, the Consultant Certification Card is issued only to members of the NGC. A non-member student who has successfully completed the four courses may apply for Consultant certification upon joining a garden club affiliated with the NGC within five years after completing the series. **Certificates of Attendance** may be awarded to non-NGC students attending a full course in a series.

Certification of Students:

Requirements:

To become eligible for a Landscape Design Study Program Consultant Certification Card, students must have a passing grade of 70 on the examinations of all four courses.

Attendance at all of the lectures and check-in for

LANDSCAPE DESIGN STUDY PROGRAM

each session (4 altogether) is required. The exam may not be taken without the required attendance. The four courses must be completed within not fewer than two years or more than seven years. While the courses are most useful to the student when taken in order from I through IV, taking them in any order is permitted. Exams are given at the end of the two days of lectures.

Member students attending courses for credit must have a three-year subscription to *THE NATIONAL GARDENER*, the official publication of the NGC. At application all members seeking credit must provide either a NGC Life Membership number, a current address label from The National Gardener, or a new three-year subscription application with payment. (This subscription requirement was adopted at the NGC Board of Directors meeting, April 1991.)

Applications:

The State LDSP Chairman in the state where the fourth course is taken prepares the application for a student's certification. If any of the student's courses have been taken out-of-state, the student must submit evidence of having passed such courses to the State LDSP Chairman of the state where the final examination was taken. The State LDSP Chairman sends the application with the examination roster to the NGC Accrediting Chairman for the region, who notifies the Schools Secretary at NGC Headquarters. The Secretary sends the certification cards to the State LDSP Chairman, who updates the records and forwards the cards to the new Consultants. The Secretary sends confirmation to the NGC Accrediting Chairman and notifies the home State LDSP Chairman, who is responsible for maintaining the records of all Consultants who reside in that state. The certification cards carry the date of the student's last examination.

Extensions for Students:

A student unable to complete the four courses within seven years due to serious problems may request an extension from the State LDSP Chairman. The request must be made before the seven years have elapsed. The State LDSP Chairman forwards the request form in duplicate for authorization to the NGC Accrediting Chairman for the region. If the request is granted, the Accrediting Chairman signs both copies, records the extension, sends one copy to the Schools Secretary at NGC Headquarters, and returns the other to the State LDSP Chairman. The State LDSP Chairman documents the extension date and then notifies the student of the time limit of the extension.

certification within five years from the year of the previous certification by one of the following means:

- ☞ Attending all (two days) of a LDSP course (no exam required). (Consultants are urged to repeat Courses I - IV.)
- ☞ Attending a complete Optional Program or tour which has been accepted by the State LDSP Chairman and specifically approved by the NGC Landscape Design Chairman.
- ☞ Attending all of a NGC accredited landscape tour and workshop.

Credit for refresher events **can be granted only once within a calendar year beginning in the year following the receipt of the Consultant Certification Card.**

The Consultant must always provide proof of the most recent accreditation to the registrar of each event for which credit is sought.

CONSULTANTS PROCEDURES FOR MAINTAINING CERTIFICATION

Refreshing:

Consultants must refresh their

Record Keeping:

After verifying each individual's records, the State LDSP Chairman distributes new Refresher Cards to Consultants who complete a course or State optional event which has been approved by the NGC Landscape Design Chairman. The State LDSP Chairman sends a roster of those refreshing to the NGC Accrediting Chairman for the region and to the Schools Secretary at NGC Headquarters. The State LDSP Chairman lists the out-of-state refreshing Consultants and notes their state affiliation. The Schools Secretary then notifies the State LDSP Chairman in the home state, where the Consultants' records are kept, and the NGC Accrediting Chairman for that region.

The Schools Secretary at NGC Headquarters mails Refresher Cards for Consultants who refresh at any **NGC** accredited optional event directly to the home State LDSP Chairman, who is responsible for maintaining the Consultant's records.

A Consultant who moves to another state must request a transfer of records in order to be listed locally as a LDSP Consultant ;

Extensions:

A Consultant unable to refresh within five calendar years due to serious problems may request an extension from the State LDSP Chairman. The request must be made before the certification has expired. The Chairman forwards the request form in duplicate for authorization to the NGC Accrediting Chairman for the region. If the request is granted, the Accrediting Chairman records the extension, sends one copy to the Schools Secretary at NGC Headquarters, and returns the other to the State LDSP Chairman. The State LDSP Chairman documents the extension year and then notifies the Consultant of the time limit of the extension.

Reinstatement:

Lapsed consultants can be reinstated within a seven (7) year time period from the last year of their certification by completing two study courses with a passing grade of 70 for each course. If the consultant is over seventy years old, the examination requirement is

waived. No waiting time is required between courses.

Removal of records:

Consultant records are retained for a period of seven years from the last year of accreditation. After this period, an individual's records are removed from all files.

MASTER CONSULTANTS

After a Consultant's **fourth** refresher the State LDSP Chairman automatically applies for the Consultant's Master Certification Card. If some of the Consultant's refreshers have taken place out-of-state, the Consultant must verify that the home State LDSP Chairman, who maintains the Consultant's records, has been notified of such refreshers. Master Consultants must refresh their certification every five years.

CONSULTANT EMERITUS

Emeritus status is granted to Master Consultants who indicate in writing to their State LDSP Chairman that they are no longer able to continue active participation. Unlike Master Consultants, Emeritus Consultants need not take refresher events to maintain their accreditation.

State LDSP Chairmen are obliged to write to Master Consultants who have not refreshed within five years and who have not requested Emeritus status to notify them that they will be removed from the roster.



**National
Garden Clubs, Inc.**

**Landscape Design
Study Program**

**Mini-Guide for
Students and
Consultants**